

Template for information regarding Company and Technology

Sr.	Description	Details
1	Name of the company	Maven Systems Pvt. Ltd.
2	Year of Establishment	2009
3	Verticals in which operating	<ul style="list-style-type: none"> - M2M / IoT - Hardware / software development services
4	Credentials of company (Quality Approvals, Type of registration/Small, Medium, Large Scale, Manufacturing Locations etc.)	<ul style="list-style-type: none"> - Small scale
5	Main Products /Components	<ul style="list-style-type: none"> - M2M / IoT <ul style="list-style-type: none"> o Asset / equipment monitoring o Vehicle tracking o Smart metering o Lighting automation o Wireless automation - Hardware and software development services <ul style="list-style-type: none"> o Embedded product development o Smartphone / cloud development
6	Previous experience in technology transfer	An American start-up has been provided asset / equipment monitoring platform with customized look and feel and shared IP basis.
7	Details of technology offered	Cloud platform for asset / equipment monitoring that connects to a variety of readily available field gateways. The platform provides, location tracking, real-time monitoring of parameters, instant SMS / email alerts and reports for analytics. Additionally configuration module helps to use same cloud platform by multiple tenants. Smartphone connectivity modules enabled on-the-go connectivity.
8	Contact Details Name: Address: E-mail: Telephone No.: Mobile: Website:	<p>Name: Mr. Dhananjay Kulkarni Address: "Govind", 7 C Shri Ganesh krupa society S No 91/1, Kothrud, Pune 411038, India.</p> <p>Email: inquiries@mavensystems.com Telephone: +91-20-32403635 Mobile: +91 98509 26914 Website: www.mavensystems.com</p>
9	Type of Partnership/ Joint Venture desired	Partnership
10	Any Other relevant Details	

Overview of M2M offerings

<p style="text-align: center;">Overview</p> <p>Maven Systems has developed variety of M2M solutions. Be it industrial controls, sophisticated machines, heavy equipment, HVAC controls, vehicles, electricity / water / gas meters or even home appliances, Maven has delivered end-to-end solutions from hardware design, embedded development, cloud connectivity and smartphone apps!</p> <p>Maven provides platform for building secure and scalable M2M / IoT solutions with quick time to market. Platforms are offered for following domains:</p> <ul style="list-style-type: none"> • Asset / heavy equipment monitoring • Vehicle tracking • Smart metering • Lighting automation • Wireless automation 	<p style="text-align: center;"><i>M2M offerings</i></p>
<p style="text-align: center;">Offerings</p> <p>Maven’s M2M / IoT ecosystem offers:</p> <ul style="list-style-type: none"> • Machine connectivity and data acquisition. • Battery operated or electricity powered wireless modules. • Collecting data in local network and sending it to cloud server. • Mesh networking in the local area network extending range to several kilometers. • Different types of gateways /data concentrators with GSM, Ethernet, Wi-Fi and Bluetooth connectivity. • Data mining and presenting it in analytical reports. • Smartphone connectivity. 	<p style="text-align: center;">Quick-to-market</p> <p>Leverage Maven’s experience in M2M arena for quick time to market by using Maven’s expertise:</p> <ul style="list-style-type: none"> • Maven has delivered M2M hardware devices for data acquisition from both non-intelligent (raw sensors) and intelligent (protocol-based) devices. • Maven has developed firmware on microcontrollers from Microchip, TI, Atmel, Cypress, Maxim Integrated, Freescale etc. and ensured that the data reaches the cloud servers. • Maven Systems has delivered cloud and smartphone applications ensuring real-time data and alarm monitoring and conclusive analytical data useful for decision making.

GeoHEMS - Generator monitoring

Overview

- Maven has developed a hardware + software solution for remotely monitoring generators.
- Generator data is transmitted to cloud server using GPRS.
- Real-time data and reports are available 24 x 7 on internet browsers and smartphones.
- Must for generators used in:
 - Mining operations.
 - Telecom towers.
 - Construction / infrastructure projects.
 - Manufacturing plants.
 - Commercial premises / data centers / health care etc.
 - Generator rental companies.

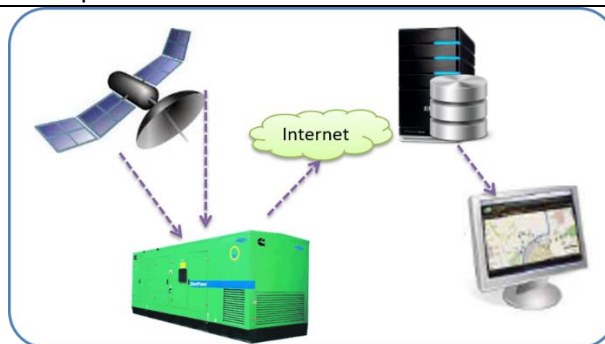


Benefits

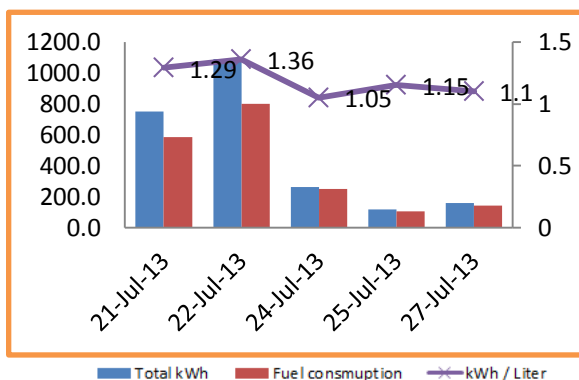
- Stop fuel thefts and hence save on 8-10% of the losses incurred due to fuel thefts.
- Monitor generator health by acting on warning alarms and eliminate **Shutdown / Fail-to-Start** situations, thus avoid catastrophic failures, downtimes and huge operational losses.
- Monitor generator efficiency / productivity by monitoring energy output and save on operational losses.

Features

- Fuel monitoring using highly accurate sensor and robust algorithm. Provides details of fuel consumed, filled and removed.
- Comprehensive monitoring of all the parameters and alarms using Modbus over RS485 based protocol.
- Energy monitoring for finding out productivity of generators.
- Preventive maintenance alerts using SMS and emails for keeping generators healthy.
- Historical reports / analytics for performance analysis and enhancements.



Start time	End time	Fuel filled in liters
06-Jun, 09:30	06-Jun, 09:30	177
06-Jun, 15:22	06-Jun, 15:50	577
06-Jun, 21:00	06-Jun, 23:12	374



GeoHEMS - Equipment monitoring

Overview

- Maven has developed a hardware + software solution for remotely monitoring construction and mining equipment.
- Generator data is transmitted to cloud server using GPRS.
- Real-time data and reports are available 24 x 7 on internet browsers and smartphones.
- Useful for equipment like:
 - Excavators.
 - Wheel / backhoe loaders.
 - Ready-mix concrete trucks.
 - Dump trucks.
 - Cranes.
 - Crushers.

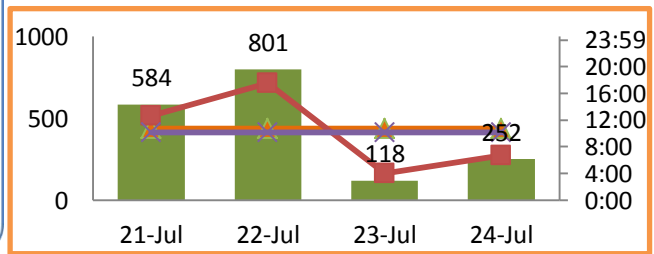
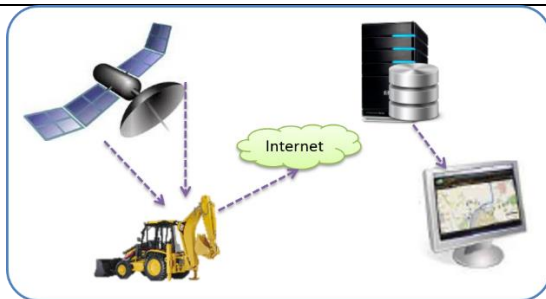
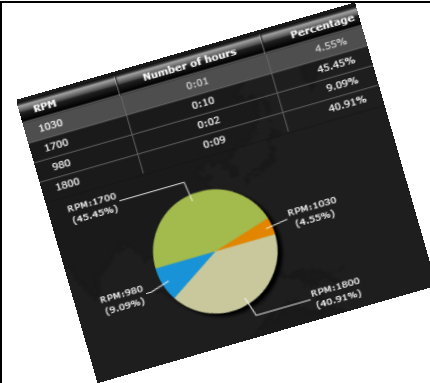


Benefits

- Stop fuel thefts and hence save on 8-10% of the losses incurred due to fuel thefts.
- Monitor equipment health using preventive maintenance and eliminate catastrophic failures, downtimes and huge operational losses.
- Increase the equipment productivity and stop their abuse / misuse and even thefts.
- Monitor and increase operator productivity.

Features

- Fuel monitoring using highly accurate sensor and robust algorithm. Provides details of fuel consumed, filled and removed.
- CAN / J1939 based ECU monitoring for monitoring critical parameters and health of equipment
- Camera and RFID for operator monitoring
- Location and work hour monitoring to precise billing.
- Remote immobilizer for controlling equipment usage.
- Preventive maintenance alerts using SMS and emails for keeping generators healthy.
- Historical reports / analytics for performance analysis and enhancements



■ Fuel consumption ◆ Average consumption ■ Engine run hours ✕ Average run hours

GeoHEMS – Commercial vehicle monitoring

Overview

- Maven has developed a hardware + software solution for remotely monitoring commercial vehicles.
- Location and engine data is transmitted over GPRS to the cloud server continuously.
- Real-time data and reports are available 24 x 7 internet browsers and smartphones.
- Useful for commercial vehicles like :
 - Tankers / trailers.
 - Refrigerated trucks.
 - Trucks.
 - Buses.
 - Taxis / cabs.
 - Private cars.

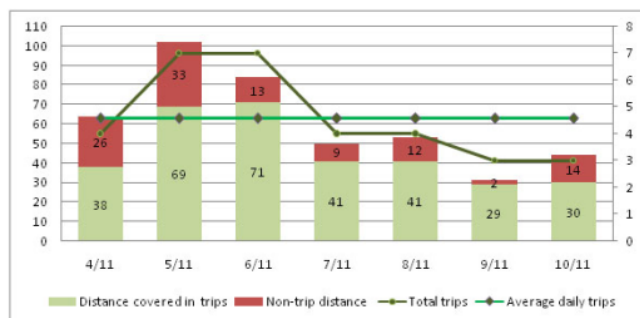
Features

- Fuel monitoring using highly accurate sensor and robust algorithm. Provides details of fuel consumed, filled and removed.
- OBD based vehicle tracking enabling remote diagnostics.
- Location monitoring along with Geofences and trips.
- Integration with SAP / ERP systems for automated audits.
- Advanced monitoring include, temperature monitoring, tanker lid monitoring.
- Historical reports / analytics for performance analysis and enhancements



Benefits

- Stop fuel thefts and hence save on 8-10% of the losses incurred due to fuel thefts.
- Monitor the kilometers travelled, trips made, thus increase the operational efficiency of fleet.
- Stop adulteration of goods by monitoring lids of chemical / fuel / milk tankers and monitoring temperature of reefer vans.
- Stop frauds and save a lot of money by integrating field data directly in SAP / ERP systems.
- Protect passengers (especially lady passengers) in taxis / cabs.



Route	Start time	End time	Total time	Distance (km)
*SEABIRD - JNPT	12/8/2013 23:37	13/8/2013 1:37	2:00	9
JNPT - Seabird	13/8/2013 1:59	13/8/2013 4:22	2:23	11
SEABIRD - CWC	13/8/2013 11:31	13/8/2013 13:00	1:29	6
CWC - Seabird	13/8/2013 13:30	13/8/2013 13:56	0:26	6

1 - 4 of 7 Records

GeoHEMS – School bus monitoring

Overview

- Maven has developed school bus monitoring solution for ensuring safety of students and increasing convenience of parents.
- Advanced monitoring options such as RFID, BLE, camera etc. provides peace of mind to school authorities and parents.

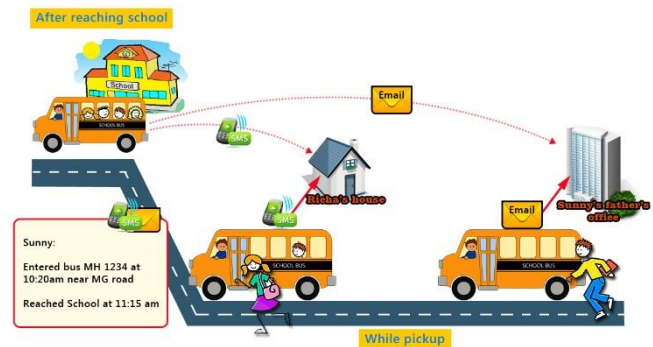
Features

- Get elapsed time about school bus reaching the bus stops.
- RFID based alerts to parents when the students board / alight the bus.
- Break down and panic alerts in form of instant SMSs.
- Continuous monitoring using internet browsers and smartphone apps.
- Over-speeding / rash driving alerts.

Benefits



- Bring unreliable drivers in check.
- No worry for school authorities and parents as student whereabouts are continuously known.
- Safety concerns are addressed by monitoring over speeding / rash driving.
- Stop misuse of school vehicles.
- Increased convenience to parents as the elapsed time of school bus is gotten just 10 minutes prior to the bus reaching the stop.



Speed report (6)

Speed: >= 80

Driver name	Latitude	Longitude	Speed(Km/hr)	Date time
Driver (Shamod)	16.3296234	74.4226303	80	24/07/2011, 11:38
Driver (Shamod)	16.3298078	74.4193182	83	24/07/2011, 11:37
Driver (Shamod)	16.3308506	74.4136952	84	24/07/2011, 11:37
Driver (Shamod)	16.3303630	74.4118729	92	24/07/2011, 11:36
Driver (Shamod)	16.3413391	74.4071808	83	24/07/2011, 11:36
Driver (Shamod)	16.4909019	74.3302416	81	24/07/2011, 11:34

MonitorMyMeter – Sub-metering solutions

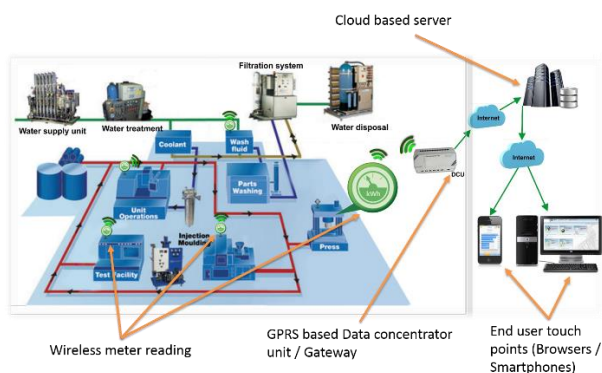
Overview

- Maven has developed wireless sub-metering solutions for collecting and analyzing metering data wirelessly.
- Wireless technology over 2.4 and Sub-1 GHz collect data from a local network and transfer data to cloud server over GPRS network.
- Meter data collection using handheld units is also available.
- Water and electricity sub metering can be achieved using the solution.

Features

- Collect meter wirelessly – retrofit solutions, no wiring required.
- Get range up to few kilometers using mesh technology.
- Battery operated data collection modules for water sub-metering.
- Connect up to 500 wireless modules to 1 data concentrator and save on recurring costs.

Benefits



- Helps to identify problems with equipment / machines. Addressing these problems may not only save energy, but prolong the life of the equipment or identify a piece of equipment that is failing.
- Identification of unnecessary equipment / machines running (such as air conditioners, lights) at undesired times like nights, off shifts, or during the weekends – thus save costs.
- Ability to get information to the facility managers the same day to identify cause of pilferage and take speedy corrective action.
- Benchmarking and comparison of usage across similar facilities (stores, warehouses, different divisions or buildings).
- Comparison of usage over different seasons (summer / winter) and different months / weeks.



GreenLightt- Lighting automation solution

Overview

- Maven Systems has developed wireless lighting automation solutions for street and commercial lighting.
- The solution is intended towards saving energy wasted because of no control over individual lights.
- Wireless technology over 2.4 and Sub-1 GHz are used for communication with lighting fixtures to control the ON / OFF status.

Features

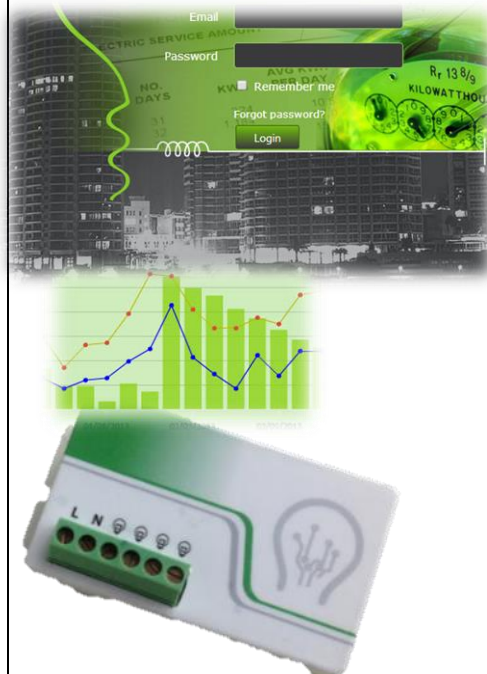
- Wireless modules with range up to 500 meters in line of sight can control up to 2 modules.
- Dimming feature available enables in extra energy saving.
- Integration with motion controls, light sensors and season-based solutions aides in optimum energy saving.
- Fault identification helps in finding out faulty lights instantly.

Benefits



Wireless street light connected to cloud and mobile through DCU

- Retrofit solution helps in energy saving without needing infrastructure changes, thus you can start with energy saving and cost reduction in matter of a week's time!
- Remote diagnostics and instant alerts help you save the support cost by reducing field visits.



WiART- Wireless automation solutions

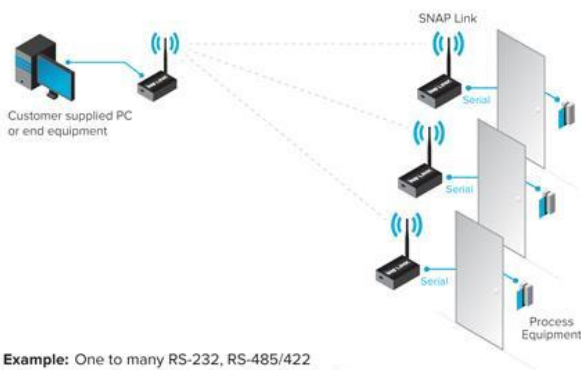
Overview

- WiART (wireless convertor modules) developed by Maven enable you to quickly convert your conventional wired solutions into wireless.
- These operate at license-free ISM frequency bands in India. WiART modules are perfect suit as they replace conventional cables!
- Application areas / industries:
 - Electric meters, water meters, energy meters, flow controllers, pressure controllers.
 - Solar panels, windmills, weighing scales.
 - Data loggers, controllers, PLCs, intelligent IOs, any industrial equipment with RS-232 port.

Features

- Plug-n-Play. No change in your existing devices.
- Supports one-to-one or one-to-many multi-drop connections.
- Point-to-point line of sight range of 600 meters.
- In-built repeater (SmartMesh) functionality to extend the effective distance to several kilometers.
- Can connect to GPRS enabled data concentrators to support cloud / remote connectivity.

Benefits



- Retrofit solution helps in building connectivity without the need of doing any infrastructure changes.
- Supports transparent mode – so single module can serve all your wireless automation needs.
- Save costs by eliminating need of repeaters.
- Remote diagnostics and instant alerts help you save the support cost by reducing field visits.

