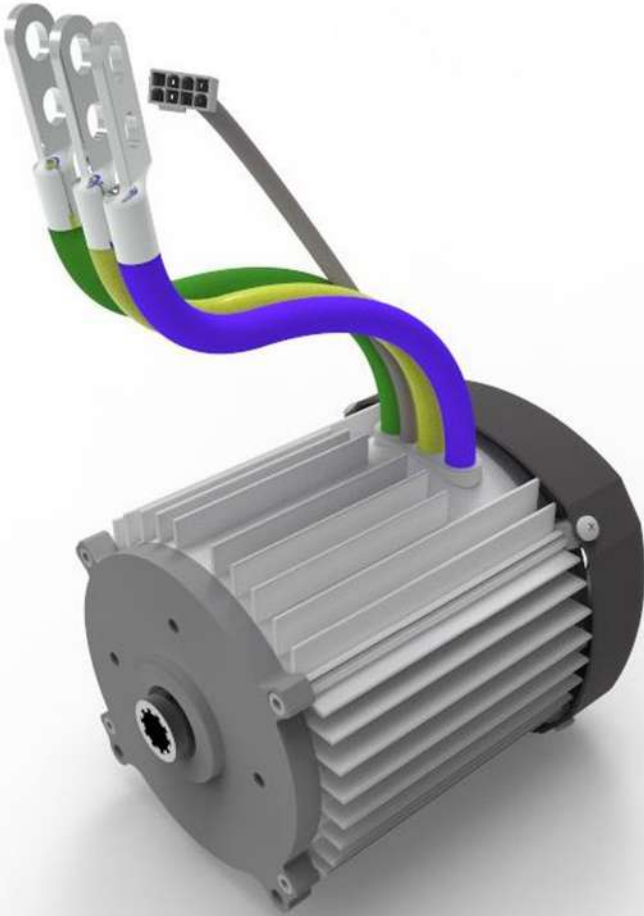


An **Electric Motor** that beats with the Nation's Pulse

Made in India | Superior Quality | Affordable Prices



High Efficiency PMSM Motor

5kW | 48V | IP67 Grade

Funded by



इलेक्ट्रॉनिक्स एवं
सूचना प्रौद्योगिकी मंत्रालय
MINISTRY OF
ELECTRONICS AND
INFORMATION TECHNOLOGY

Designed and Developed by



Technology Partner

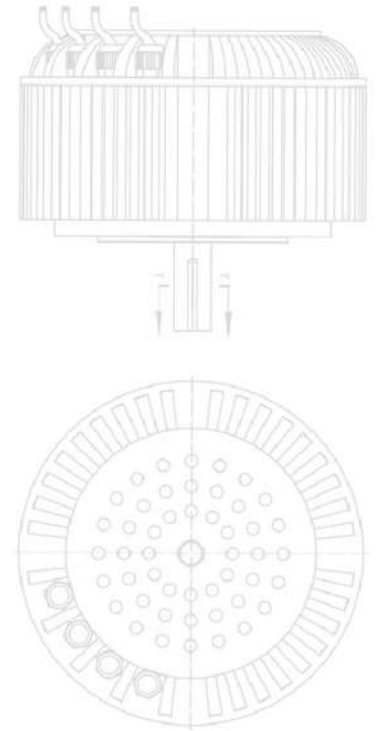
motorz

Motor Specification

48V Electric Power Train for E-Rickshaw
Built for Indian temperature conditions & terrains

Motor Specs

Motor type	PMSM
Rated power	5kW
Rated torque	10Nm
Rated speed	4700rpm
Peak mode	20Nm @ 3000rpm
Motor efficiency	94%
Torque ripple	<10%
Motor size	172mm X 201mm
IP Grade	IP67



Controller Specs

Controller type	FOC Sinusoidal Output
Operating range	40 - 60 V DC
Nominal voltage	48V
Power nominal	5kW
Peak power	6.8kW
Continuous current	108Arms
Peak current AC	151Arms
Controller efficiency	97%
Controller Dimensions (L X B X H)	219mm X 156mm X 92mm
Controller weight	2.5kg
IP Grade	IP67
Max. Operating Ambient	50 Deg-C