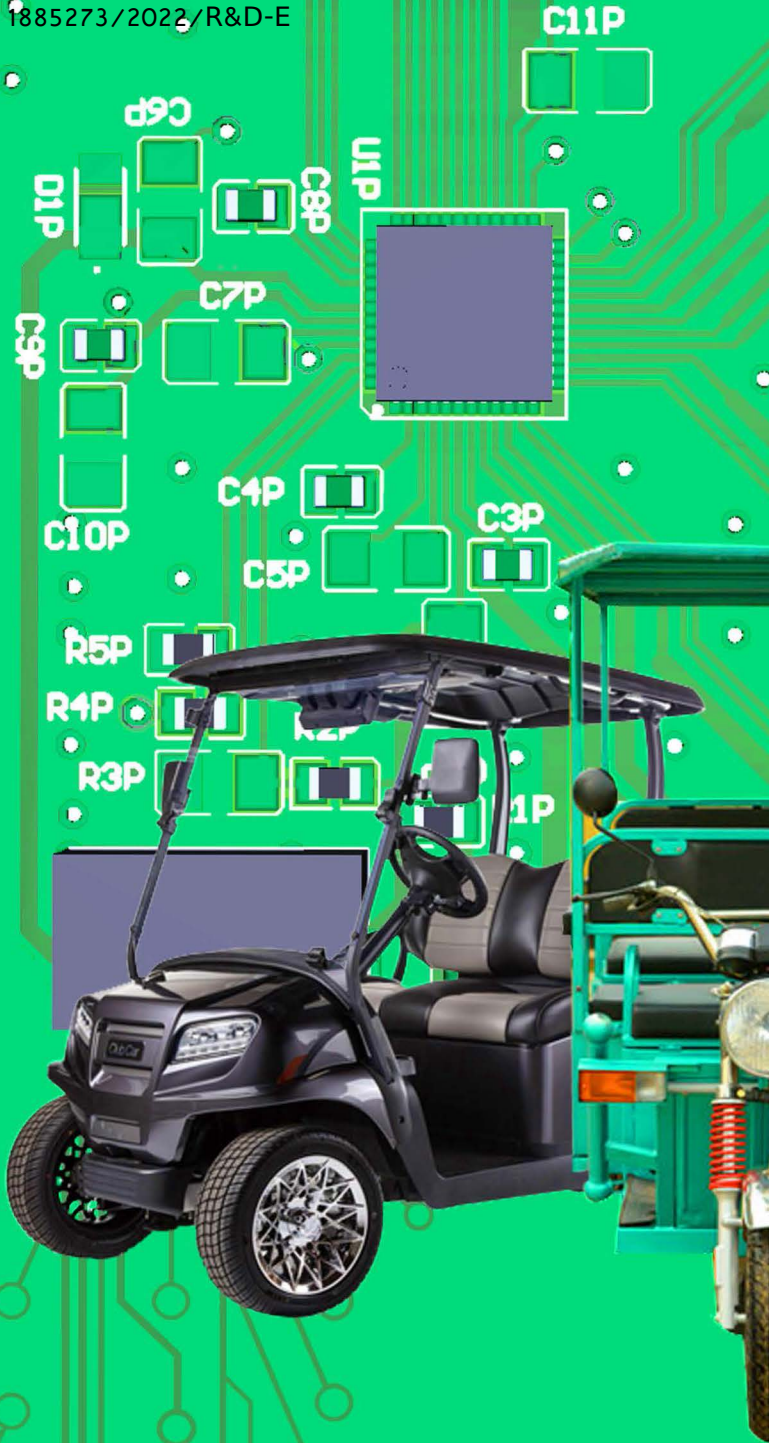


Electrification Package For Light Duty Vehicles



- Range Estimation
- Intelligent Fault detection
- Driver Information System
- Enhanced Safety

- High efficiency
- Made in India
- Unmatched features
- Enhanced Thermal Performance

Funded by

Ministry of
Electronics &
Information Technology
Government of India



Designed & Developed by



Industry Partner



Electric Vehicles For the Indians By the Indians

1.2kW BLDC Motor

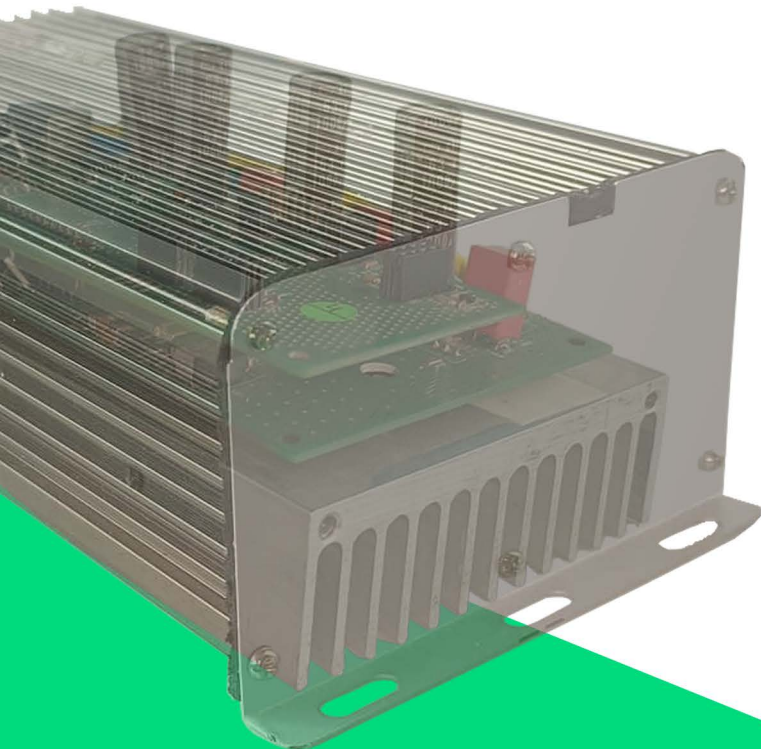
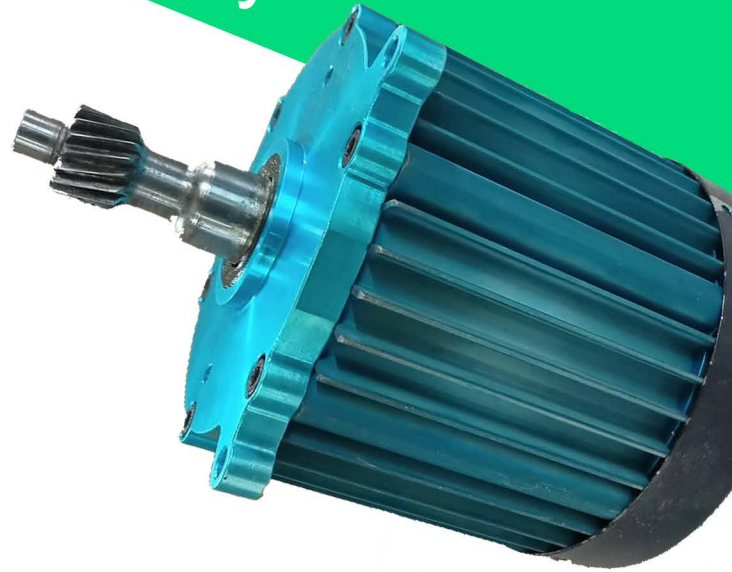
Rated Torque : 4Nm @ 2800 RPM

Peak Torque : 22Nm @ 350 RPM

Efficiency : >90%

Weight : 5.9 kg

Suitable for High Gradeability



Integrated Controller (MCU + VCU)*

Nominal Power : 1.5 kW

Peak Power : 2.5 kW

Input Voltage : 48 - 60 V

Efficiency : ~95%

Peak current : 50 A DC

Peak current AC : 150 A(rms)

Scalable for different Power Levels

Industry First Features

- Range Estimation incorporating Indian conditions
- Improved multi-featured Driver Information System
- Regenerative and Mechanical braking for enhancing range and safety
- Intelligent fault sensing and reporting for the safety of driver and passengers

Contact :

sengupta.s²@atdc.iitkgp.ac.in

ddeb Nath@ee.iitkgp.ac.in

* MCU : Motor Control Unit

VCU : Vehicle Control Unit

Generated from eOffice by Om Krishan Singh, SCI- D(OKS)-R&D-E, SCIENTIST D, MeitY on 08/11/2023 03:54 PM

ICAT Certifications under progress (AIS 041, AIS 004:Part3, IP67)